



REGIONAL SPECIALISED METEOROLOGICAL CENTRE-TROPICAL CYCLONES, NEW DELHI

TROPICAL CYCLONE ADVISORY NO. 24

FROM: RSMC TROPICAL CYCLONES NEW DELHI DATED 06.12.2023

FROM: RSMC –TROPICAL CYCLONES, NEW DELHI

**TO: STORM WARNING CENTRE, NAYPYI TAW (MYANMAR)
STORM WARNING CENTRE, BANGKOK (THAILAND)
STORM WARNING CENTRE, COLOMBO (SRILANKA)
STORM WARNING CENTRE, DHAKA (BANGLADESH)
STORM WARNING CENTRE, KARACHI (PAKISTAN)
METEOROLOGICAL OFFICE, MALE (MALDIVES)
OMAN METEOROLOGICAL DEPARTMENT, MUSCAT (THROUGH RTH JEDDAH)
YEMEN METEOROLOGICAL SERVICES, REPUBLIC OF YEMEN (THROUGH RTH JEDDAH)
NATIONAL CENTRE FOR METEOROLOGY, UAE (THROUGH RTH JEDDAH)
PRESIDENCY OF METEOROLOGY AND ENVIRONMENT, SAUDI ARABIA (THROUGH RTH JEDDAH)
IRAN METEOROLOGICAL ORGANISATION, (THROUGH RTH JEDDAH)
QATAR METEOROLOGICAL DEPARTMENT (THROUGH RTH JEDDAH)**

TROPICAL CYCLONE ADVISORY NO. 24 FOR NORTH INDIAN OCEAN (THE BAY OF BENGAL AND ARABIAN SEA) VALID FOR NEXT 120 HOURS ISSUED AT 0330 UTC OF 06.12.2023 BASED ON 0000 UTC OF 06.12.2023

SUB: DEEP DEPRESSION (REMNANT OF CYCLONIC STORM “MICHAUNG”, PRONOUNCED AS MIGJAUM) WEAKENED INTO A DEPRESSION OVER NORTHEAST TELANGANA

THE DEEP DEPRESSION (REMNANT OF CYCLONIC STORM “MICHAUNG”, PRONOUNCED AS MIGJAUM) OVER CENTRAL COASTAL ANDHRA PRADESH MOVED NEARLY NORTHWARDS WITH A SPEED OF 11 KMPH DURING PAST 06 HOURS, WEAKENED INTO A DEPRESSION AND LAY CENTERED AT 0000 UTC OF TODAY, THE 06TH DECEMBER, 2023 NEAR LATITUDE 17.4°N AND LONGITUDE 80.5°E OVER NORTHEAST TELANGANA AND ADJOINING SOUTH CHHATTISGARH-SOUTH INTERIOR ODISHA-COASTAL ANDHRA PRADESH, ABOUT 50 KM EAST-NORTHEAST OF KHAMMAM (43137), 110 KM NORTH-NORTHWEST OF GANNAVARAM (43181) AND 250 KM SOUTHWEST OF JAGDALPUR (43041).

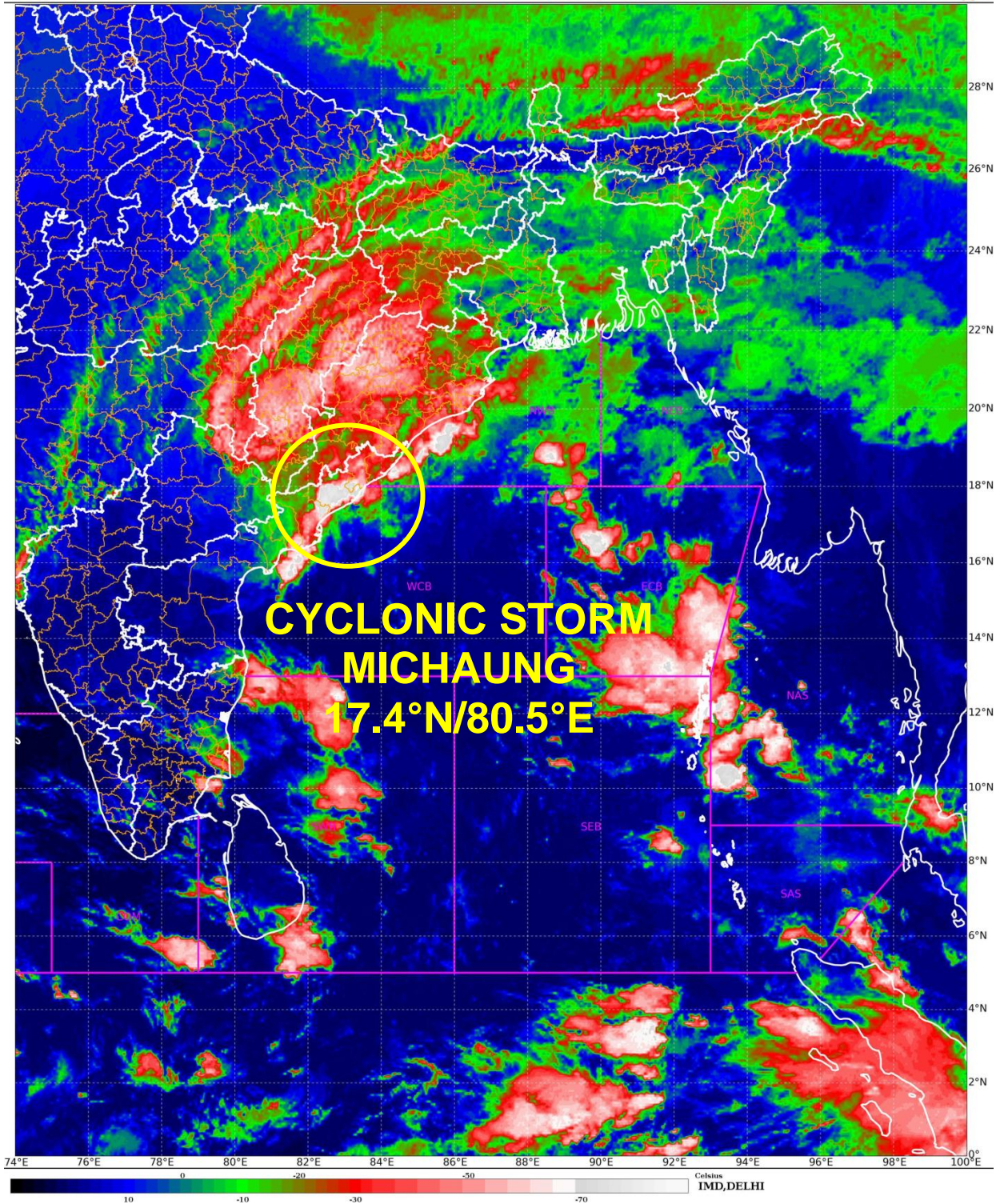
THE SYSTEM IS LIKELY TO CONTINUE TO MOVE NEARLY NORTHWARDS AND WEAKEN FURTHER INTO A WELL MARKED LOW PRESSURE AREA DURING NEXT 06 HOURS.

INSAT-3D IMAGERY AT 0000 UTC OF 06TH DECEMBER, INDICATES CENTER IS POORLY DEFINED, ASSOCIATED WITH THE SYSTEM SCATTERED TO BROKEN LOW/MEDIUM CLOUDS WITH EMBEDDED INTENSE TO VERY INTENSE CONVECTION LAY OVER NORTH COASTAL ANDHRA PRADESH (MINIMUM CLOUD TOP TEMPERATURE IS MINUS 80 DEGREE CELSIUS), EAST TELANGANA, SOUTH CHHATTISGARH, SOUTH ORISSA (MINIMUM CLOUD TOP TEMPERATURE IS MINUS 70 DEGREE CELSIUS), AND MODERATE TO INTENSE CONVECTION LAY OVER EAST VIDARBHA, EAST MADHRA PRADESH, NORTH CHHATTISGARH AND NORTH ORISSA.

ASSOCIATED MAXIMUM SUSTAINED WIND SPEED IS 20 KNOTS GUSTING TO 30 KNOTS ESTIMATED CENTRAL PRESSURE IS 1005 HPA.

THE CURRENT MAXIMUM SUSTAINED WIND SPEED IS 35-45 KMPH GUSTING TO 55 KMPH. THE SYSTEM WILL WEAKEN FURTHER INTO A WELL MARKED LOW PRESSURE AREA BY 0600 UTC OF TODAY, THE 06TH DECEMBER, 2023.

(ARULALAN T)
RSMC NEW DELHI



INSAT 3D IMAGE BASED ON 0000 UTC OF 06TH DECEMBER 2023

Cloud distribution: (a) Isolated: <25%, Scattered:25-50%, Broken: 51-75%, Solid:>75%, Convection Intensity: (a) Weak: Cloud Top Temperature (CTT) >-25°C, (b) Moderate: CTT: - 25°C to -40°C, (c) Intense: CTT: - 41°C to -70°C and (d) Very Intense: : Less than -70°C
PROBABILITY OF CYCLOGENESIS (FORMATION OF DEPRESSION):NIL: 0%, LOW: 1-33%, , MODERATE: 34-66% AND HIGH: 67-100%
This is a guidance Bulletin for WMO/ESCAP Panel Member countries. Visit respective National websites for Country specific Bulletins



OBSERVED AND FORECAST TRACK IN ASSOCIATION WITH DEPRESSION (REMNANT OF SEVERE CYCLONIC STORM "MICHAUNG") OVER NORTHEAST TELANGANA AND ADJOINING SOUTH CHHATTISGARH-SOUTH INTERIOR ODISHA-COASTAL ANDHRA PRADESH BASED ON 0000 UTC (0530 IST) OF 6TH DECEMBER 2023.



DATE/TIME IN UTC

IST=UTC + 0530

L: LOW PRESSURE AREA

WML: WELL MARKED LOW PRESSURE AREA

D: DEPRESSION (17-27 KT)

DD: DEEP DEPRESSION (28-33 KT)

CS: CYCLONIC STORM (34.47 KT)

SCS: SEVERE CYCLONIC STORM (48-63KT)

VSCS: VERY SEVERE CYCLONIC STORM (64-89 KT)

ESCS: EXTREMELY SEVERE CYCLONIC STORM (90-119 KT)

SuCS: SUPER CYCLONIC STORM (≥ 120 KT)

● LESS THAN 34 KT

⊙ 34.47 KT

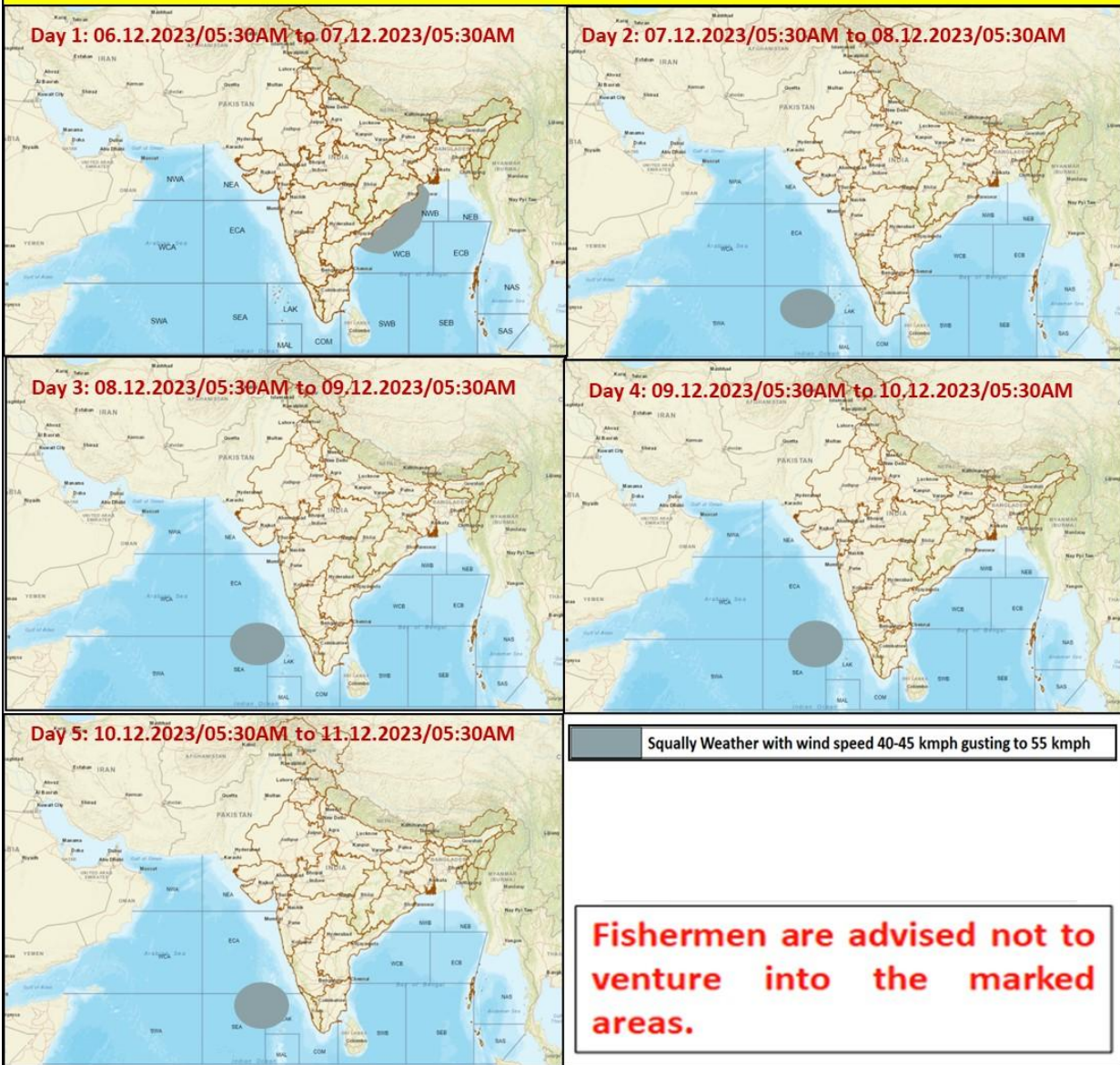
⊙ ≥ 48 KT

— OBSERVED TRACK

— FORECAST TRACK

▲ CONE OF UNCERTAINTY

Fishermen Warning Graphics



Cloud distribution: (a) Isolated: <25%, Scattered:25-50%, Broken: 51-75%, Solid:>75%, Convection Intensity: (a) Weak: Cloud Top Temperature (CTT) >-25°C, (b) Moderate: CTT: - 25°C to -40°C, (c) Intense: CTT: - 41°C to -70°C and (d) Very Intense: : Less than -70°C
 PROBABILITY OF CYCLOGENESIS (FORMATION OF DEPRESSION):NIL: 0%, LOW: 1-33%, , MODERATE: 34-66% AND HIGH: 67-100%
 This is a guidance Bulletin for WMO/ESCAP Panel Member countries. Visit respective National websites for Country specific Bulletins

Flash Flood Guidance

24 hours Outlook for the Flash Flood Risk (FFR) till 1130 IST of 06-12-2023 :

High flash flood risk likely over few watersheds & neighbourhoods of following coastal districts of **Andhra Pradesh**

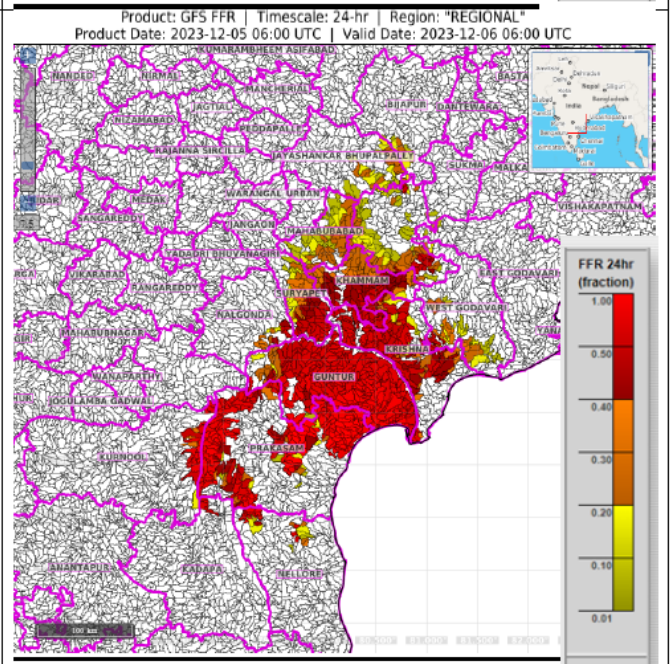
Guntur, Prakasam and Krishna (>50%) districts of **Andhra Pradesh**;

Moderate flash flood risk likely over few watersheds & neighbourhoods of following coastal districts (>20% - <50%) of **Andhra Pradesh and Telangana** during next 24 hours.

West Godavari, Guntur, Kurnool, Prakasam and Nellore (>20% - <50%) districts of **Andhra Pradesh**;

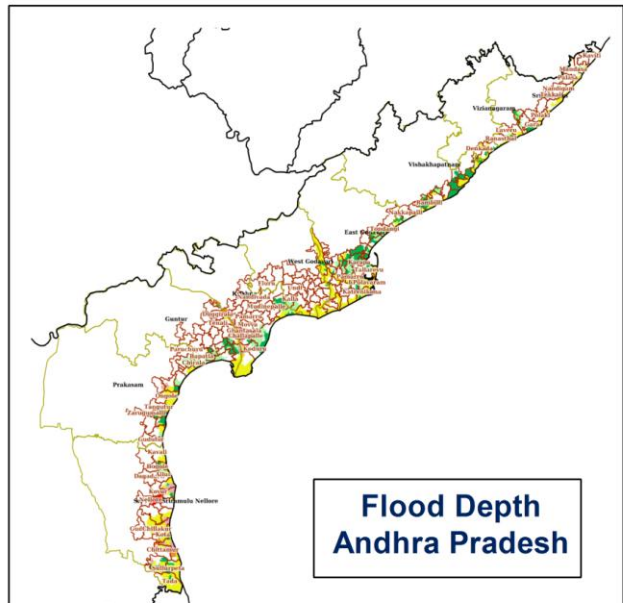
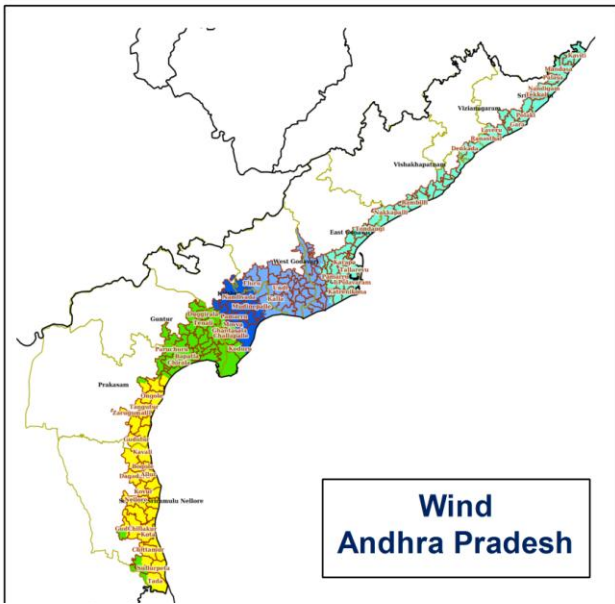
Nalgonda, Suryapet, Khammam, Bharadri kothagudem and Mahabubabad (>20% - <50%) districts of **Telangana**.

Surface runoff/ Inundation may occur at some fully saturated watersheds & low-lying areas over AoC as depicted in map due to Severe Cyclonic Storm 'Michaung' during next 24 hours.



Flash Flood Risk	
<div style="width: 20px; height: 10px; background-color: red; display: inline-block;"></div>	High Risk (Take Action)
<div style="width: 20px; height: 10px; background-color: orange; display: inline-block;"></div>	Moderate Risk (Be Prepared)
<div style="width: 20px; height: 10px; background-color: yellow; display: inline-block;"></div>	Low Risk (Be Updated)

Hazard Map with Severe Cyclonic Storm MICHAUNG over Westcentral & adjoining off south Andhra Pradesh coast



LEGEND	State Boundary	District Boundary	Tehsil Boundary	Village Boundary
	Wind Speed (Less than 31 Km/h)	Wind Speed (31 - 49 Km/h)	Wind Speed (49 - 61 Km/h)	
	Wind Speed (61 - 88 Km/h)	Wind Speed (88 - 117 Km/h)	Wind Speed (117- 166 Km/h)	
	Wind Speed (166 - 221 Km/h)	Wind Speed (Greater than 221 Km/h)		
				Wind

LEGEND	State Boundary	District Boundary	Tehsil Boundary	Village Boundary
	Very Low (Less than 0.25 m)	Low (0.25 to 0.50 m)	Moderate (0.50 to 1.0 m)	
	High (1.0 to 2.0 m)	Very High (2.0 to 3.0 m)	Extreme (Greater than 3.0 m)	
				Flood Depth

Cloud distribution: (a) Isolated: <25%, Scattered:25-50%, Broken: 51-75%, Solid:>75%, Convection Intensity: (a) Weak: Cloud Top Temperature (CTT) >-25°C, (b) Moderate: CTT: - 25°C to -40°C, (c) Intense: CTT: - 41°C to -70°C and (d) Very Intense: : Less than -70°C
 PROBABILITY OF CYCLOGENESIS (FORMATION OF DEPRESSION):NIL: 0%, LOW: 1-33%, , MODERATE: 34-66% AND HIGH: 67-100%
 This is a guidance Bulletin for WMO/ESCAP Panel Member countries. Visit respective National websites for Country specific Bulletins